

LAW OFFICES OF JEFFREY G. MARSOCCI, PLLC

DIRECTIONS TO OUR OFFICE

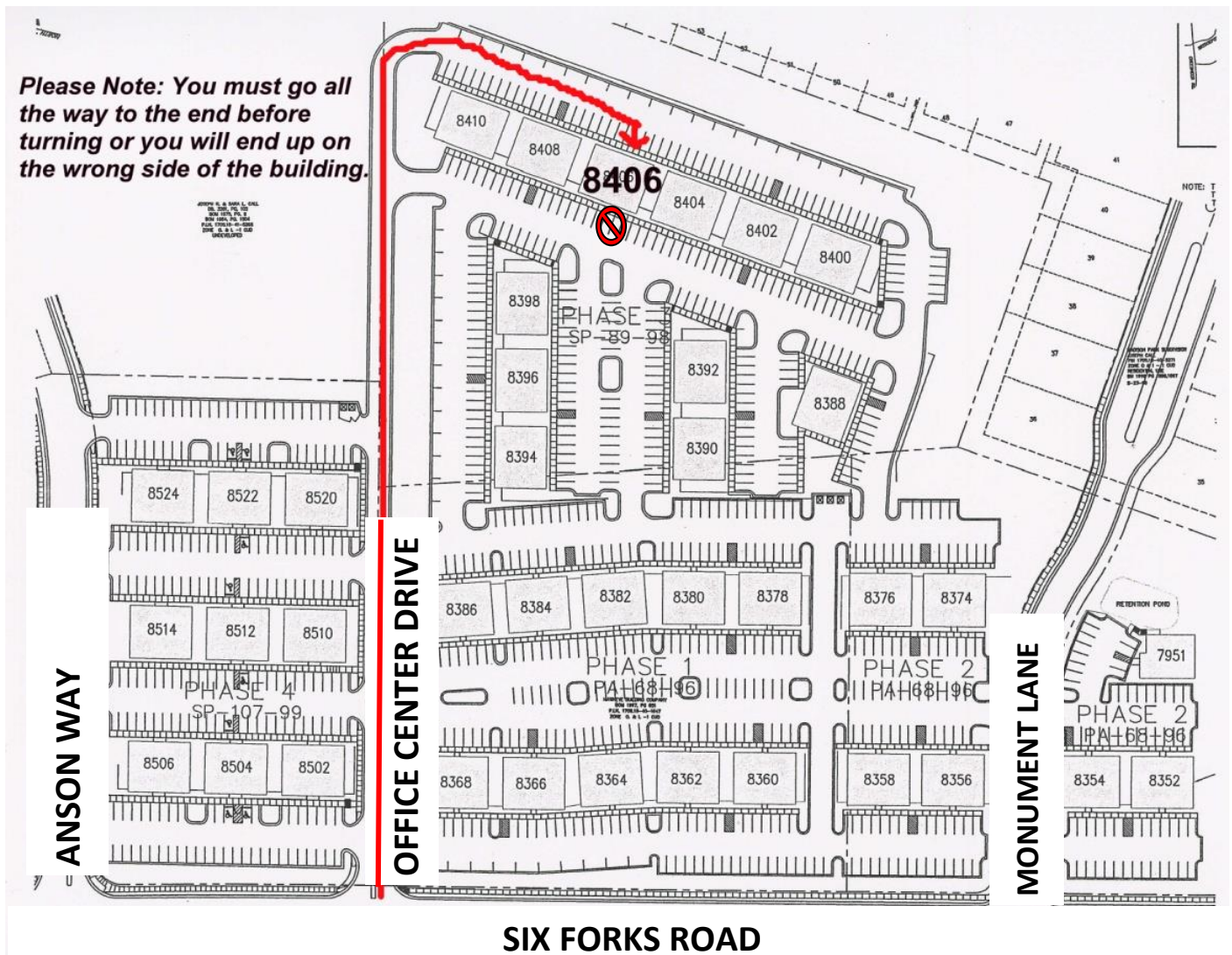
NORTH RALEIGH OFFICE:

8406 SIX FORKS ROAD, SUITE 102, RALIEGH, NC 27615—(919) 844-7993

FROM I-440- TAKE the SIX FORKS RD NORTH exit, EXIT 8B, toward NORTH HILLS – GO 4.3 MILES AND MAKE A RIGHT ON OFFICE CENTER DRIVE, GO TO THE DEAD END AND MAKE A RIGHT. WE ARE IN THE THIRD BUILDING ON THE RIGHT.

FROM I-540- TAKE the SIX FORKS RD exit, EXIT 11 – TURN TO GO SOUTH. (LEFT FROM WB, RIGHT FROM EB) GO 1.2 MILES AND MAKE A LEFT ONTO OFFICE CENTER DRIVE, GO TO THE DEAD END AND MAKE A RIGHT. WE ARE IN THE THIRD BUILDING ON THE RIGHT.

GPS Directions – ENTER THE INTERSECTION OF SIX FORKS ROAD AND OFFICE CENTER DRIVE. (**DO NOT ENTER OUR FULL ADDRESS**) TURN ONTO OFFICE CENTER DRIVE, GO TO THE DEAD END AND MAKE A RIGHT. WE ARE IN THE THIRD BUILDING ON THE RIGHT.



ASHEVILLE OFFICE – INSIDE INFINITY WEALTH MANAGEMENT

3400 SWEETEN CREEK ROAD, SUITE A, ARDEN, NC 28704—(828) 423-0885

FROM I-40- TAKE I-40 W TO THE US-25-ALT exit, TURN LEFT ONTO US-25 ALT (SWEETEN CREEK RD) TRAVEL 5.2 MILES. THE OFFICE IS ON THE LEFT SIDE OF THE ROAD AT THE INTERSECTION OF ROSSCRAGGON RD. THE ENTRANCE IS AT THE BACK OF THE BUILDING, AND SUITE A IS ON THE RIGHT.

FROM SOUTH- HEAD NORTH ON US-26. TAKE EXIT 44 FOR US-25 NORTH. TURN RIGHT ON SWEETEN CREEK RD. TRAVEL 1.7 MILES. THE OFFICE IS ON THE RIGHT SIDE OF THE ROAD AT THE INTERSECTION OF ROSSCRAGGON RD. THE ENTRANCE IS AT THE BACK OF THE BUILDING, AND SUITE A IS ON THE RIGHT.

BREVARD OFFICE – INSIDE LANDMARK FINANCIAL

150 HENDERSONVILLE HIGHWAY, PISGAH FOREST, NC 28768—(828) 423-0885

FROM ASHEVILLE - TAKE EXIT 40 OFF I-26 (ASHEVILLE REGIONAL AIRPORT EXIT) TURN RIGHT ONTO NC-280 TOWARD BREVARD (TURN LEFT IF COMING FROM HENDERSONVILLE) IN 15.8 MILES TURN LEFT ONTO US-64 E TOWARD HENDERSONVILLE IN 0.2 MILES TURN RIGHT – OFFICE IS IN THE SAME PARKING LOT AS MARATHON GAS STATION

FROM HENDERSONVILLE- (PARDEE HOSPITAL AREA) TAKE US-64 W TOWARD BREVARD IN 16.5 MILES TURN LEFT – OFFICE IS IN THE SAME PARKING LOT AS MARATHON GAS STATION